



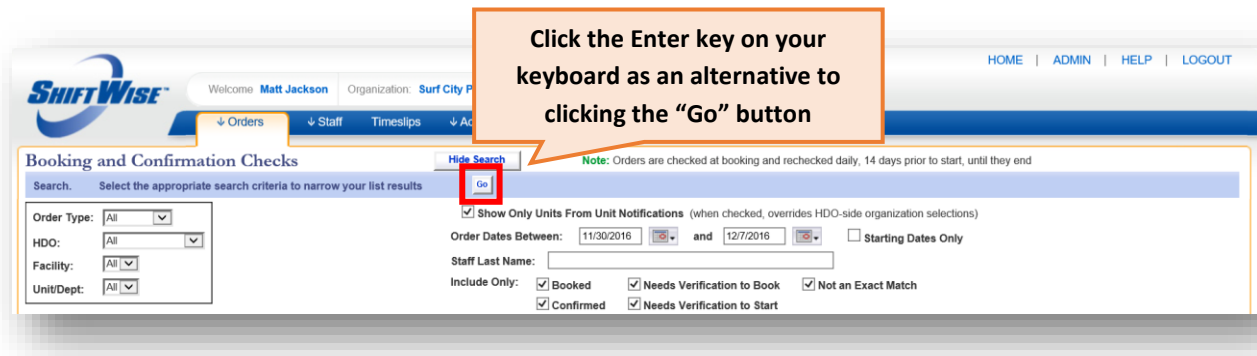
New Release: Enter Key Functionality Update
Audience: SUPPLIER
Release Date: 11/30/16

ShiftWise is pleased to announce the release of a new feature!

- **Enter Key Functionality Update** – The **Enter** key functionality (bypassing the “Go” button) is now available on several pages within ShiftWise.

Enter Key Functionality Update

On October 31, we released a feature which allowed the **Enter** key to act as the “Go” button on the Orders, Staff and Timeslips List Page search filters within ShiftWise. With this release the functionality now applies to additional pages!



Additional pages include:

- Booking Checks
- NCR
- Statements
- Invoice Memos
- Contacts
- Event Log
- User List

If you would like to discuss the feature further or have questions, please reach out to the ShiftWise 24/7 Support Team for assistance.

Phone: 1-866-399-2220

Email: support@shiftwise.com